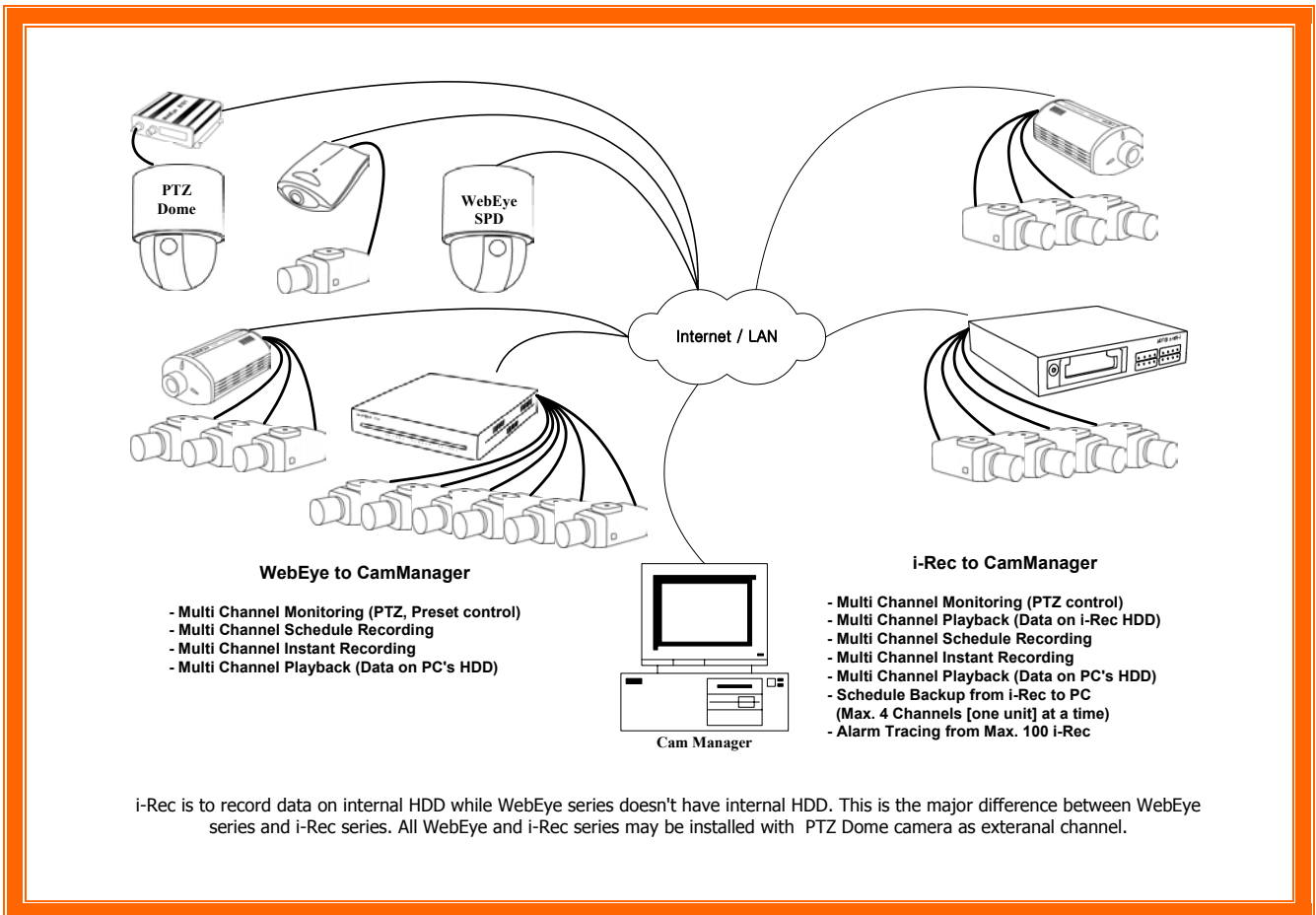


Cam Manager Multi-camera control solution



Introducing the Cam Manager Control Software. The Cam Manager can control up to 100 i-Rec or WebEye products (or Max. 400 channels). Up to 16 channels, from different locations, can be viewed simultaneously! In addition, the Cam Manager can control P/T/Z and preset positions from the SPD-160 or the B-101. Cam Manager allows you to view and record images from any WebGate product. View and control images from the WebEye series and the i-Rec series on the same screen! With the Cam Manager you can Monitor, Playback, Quick Record, Schedule Record, Schedule Back-ups, and Trace Alarms all through a single computer. The high quality and solid reliability found in all WebGate products come together with the Cam Manager Control Software. Cam Manager, a comprehensive solution for total remote surveillance.

Key Feature

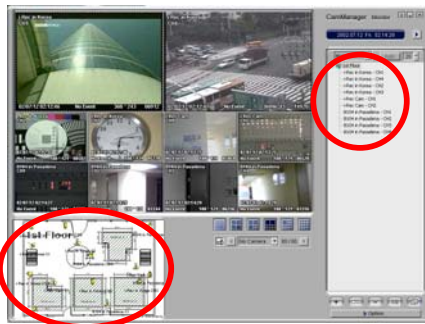
<Monitoring>

- Simultaneous monitoring of 1, 4, 7, 10, 13, or 16 channels.
- Group creation with multi-channels and auto-rotate between channels within a group or among several groups.
- Map creation with multi-channels and auto-rotate between channels within a map or among several maps.
- Pop-up channel for quick response to event triggers.
- PTZ control (on-the-screen control) for external dome cameras
- Preset control for WebEye SPD or WebEye B101
- Single image capture in BMP format.

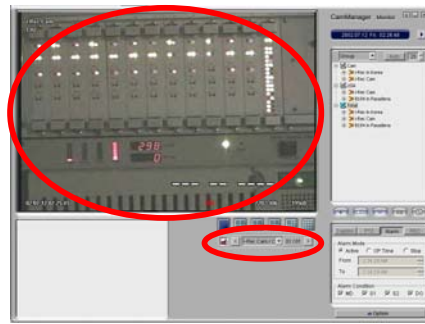
See images below for Map / Event pop-up / PTZ & Preset function



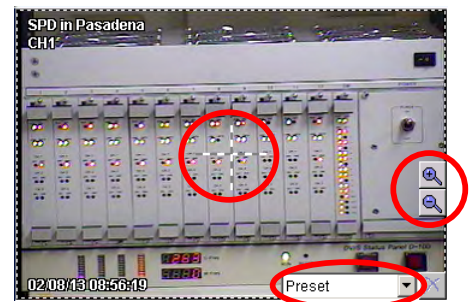
< Monitoring Program >



<Map Function>



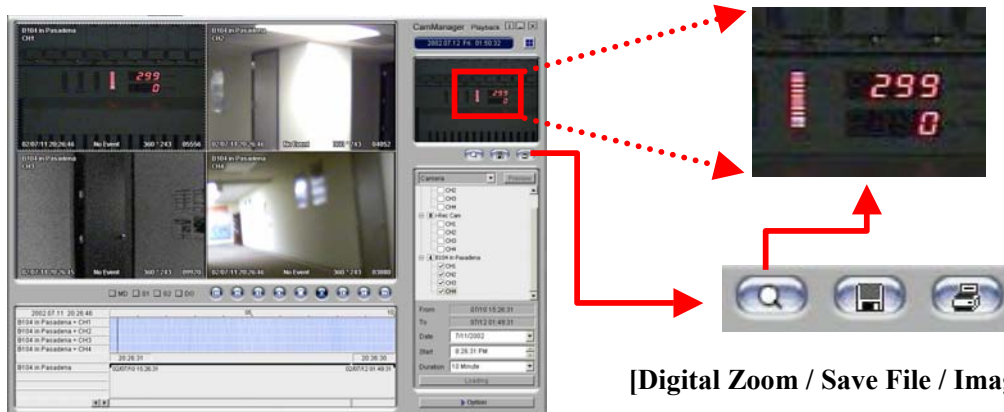
<Event Pop-up Window>



<PTZ & Preset>

<Playback>

- Simultaneous playback with maximum 4 channels from any registered i-Rec or WebEye series.
 - i-Rec: Recorded data on internal HDD and/or on PC's HDD
 - WebEye: Recorded data on PC's HDD
 - Data recording on PC's HDD
 - WebEye series: Schedule & Instant Recording.
 - i-Rec series: Schedule & Instant Recording, Schedule & Instant Backup.
- Play speed control with recorded image on i-Rec internal HDD depends on Network bandwidth and PC performance.
- Recoded video format converting to AVI with 'File Converter' (For File Converter, please refer to 4th page.)



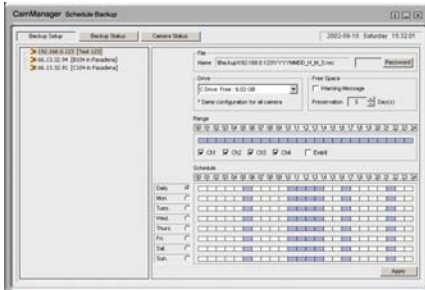
[Digital Zoom / Save File / Image Print]

<Cam Manager Playback Program>

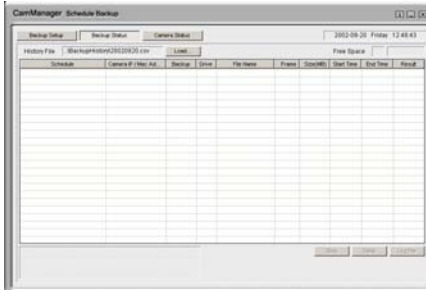
<Schedule Backup>

- Backup scheduling per day or per weekly basis
- Data on an i-Rec's HDD is backed up to CamManager PC 's HDD.
- Log of backup schedule and backup result.
- Running status check with all scheduled i-Recs

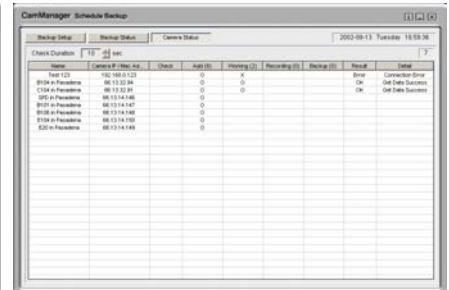
<Setup Interface>



<Backup Status/Result Monitoring>



<Camera Status Monitoring>

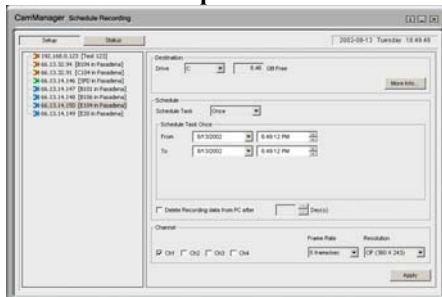


<Schedule Backup Program>

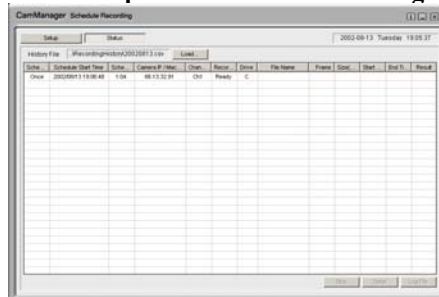
<Schedule Recording>

- Recording scheduling for one-time, daily, weekly, or monthly.
- Data recorded on CamManager PC's HDD through WebEye or i-Rec series.
- Multi-scheduling with WebEye or i-Rec series products.
- Log of recording schedule and backup result.

<Setup Interface>



<Backup Status/Result Monitoring>

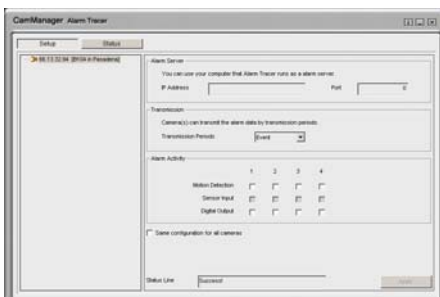


<Schedule Recording Program>

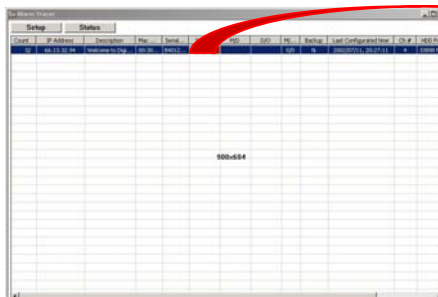
<Alarm Tracer>

- Tracing all event triggered situation of up to 100 units of i-Rec through motion detection and external sensors.
- Maintain log of tracing result.
- Event triggered live image window pops up when the event log is selected.

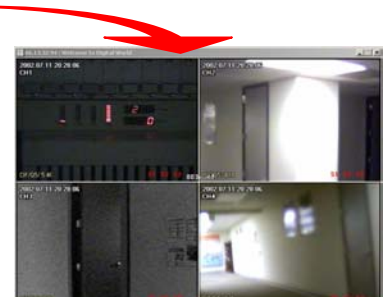
<Setup Interface>



<Alarm Status Monitoring>



<Image Pop-up Window>



<Alarm Tracer Program>

Solutions

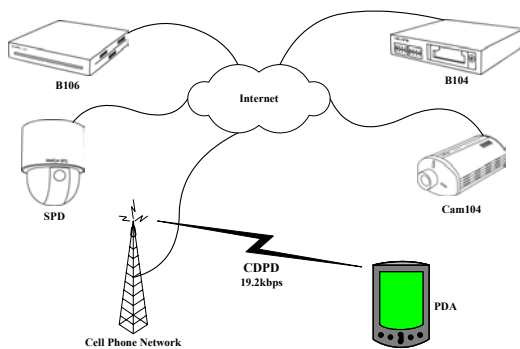
*** File Converter (For WebEye and i-Rec)**

- Recorded videos from i-Rec or WebEye series can be converted into AVI video clips.
- Converted video clips can be played through video player like Media Player, Quick Time Player, etc.

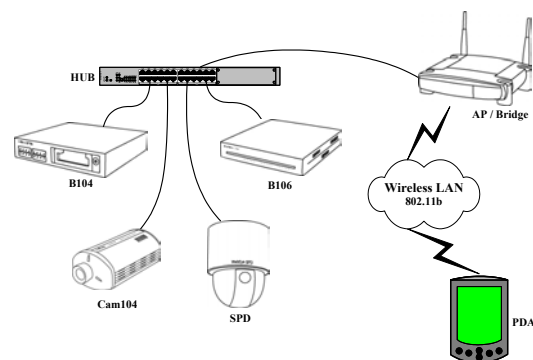


*** Live Image Monitoring on Wireless Network (For WebEye and i-Rec)**

- Live image monitoring on wireless Internet through cellular phone network. (CDPD, 19.2Kbps)
- Live image monitoring on wireless LAN through access point, wireless bridge, etc. (802.11b, 11Mbps)



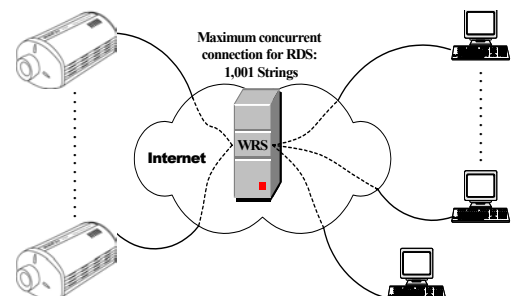
<Wireless Internet>



<Wireless LAN>

*** Image Re-Distribution Server (For WebEye)**

- RDS (Image Re-Distribution Server) is a server solution for multi-user support with up to 1,000 users at the same time and IP shortage problem.
- RDS supports 1,001 concurrent connections at the same time. Out of the 1,000 connections, RDS is to be connected with maximum 500 units of WebEyes (of fixed, dynamic or even private IP addresses) concurrently.



Distributed by:

WebGate USA.

465 Halstead St., Suite #110
Pasadena, CA 91107, USA

Tel: 1-626-351-6500
Fax: 1-626-351-3660

WebGate Inc.

4F, Pika Bldg., 894-20, Hoky
2-dong, Dongan-gu, Anyang-si,
Kyunggi-do, Korea (431-836)

Tel: 82-31-455-3555
Fax: 82-31-455-3955
Sales@webgateinc.com
[Http://www.webgateinc.com](http://www.webgateinc.com)